



niche
N I L G U N • D E R M A N

FALL 19



niche

Niche is a collection of modern soft separates with rich textures, textiles, and distinctive architectural details. It is designed and sewn in the USA and found in high-end boutiques across the US and Canada since 1996.

JULY

Deep jewel tones of evergreen and merlot pair back to dark, inky navy.

A playful lightweight plaid, colorblocked separates, and textured pucker fabrics are all great travel pieces.



Autumn Plaid

Rayon: Black

Fans

Large Pucker: Merlot

Small Pucker: Merlot

Large Pucker: Navy

Large Pucker: Navy





CHELSEA TUNIC
Rayon: Black/Navy
Style #4366



TRIANGLE TOP
Pucker: Emerald
Style #64735



DANDELION TOP
Pucker: Navy
Style #64752



MOON PANT
Pucker: Navy
Style #64751

**Ways to style the
Origami Top & Tunic**



ORIGAMI TOP
Rayon: Black
Style #4370

PARK SLOPE PANT
Rayon: Black/Navy
Style #4371

PLAID SCARF
Autumn Plaid:
Multi
Style #64760



TRIANGLE TOP
Autumn Plaid:
Multi
Style #64759



COCOON DRESS
Autumn Plaid: Multi
Style #64761



Salsa Tee
Fans: Multi
Style #72308

HIGHLIGHT TUNIC
Pucker: Navy
Style #820914



July | Fall 2019



WREATH JACKET
Pucker: Merlot
Style #64745

CANOPY PANT
Pucker: Navy
Style #64742

SEPT

Whimsy in a water-resistant leopard print coat and marble print tunic. Modern separates in our new Roma fabric, which has the right mix of polish and comfort with a touch of stretch.



Angles Knit

Cypress Knit

Rayon: Dijon

Leopard Rain

Leopard Twill

Rayon: Black Marble

Roma: Black

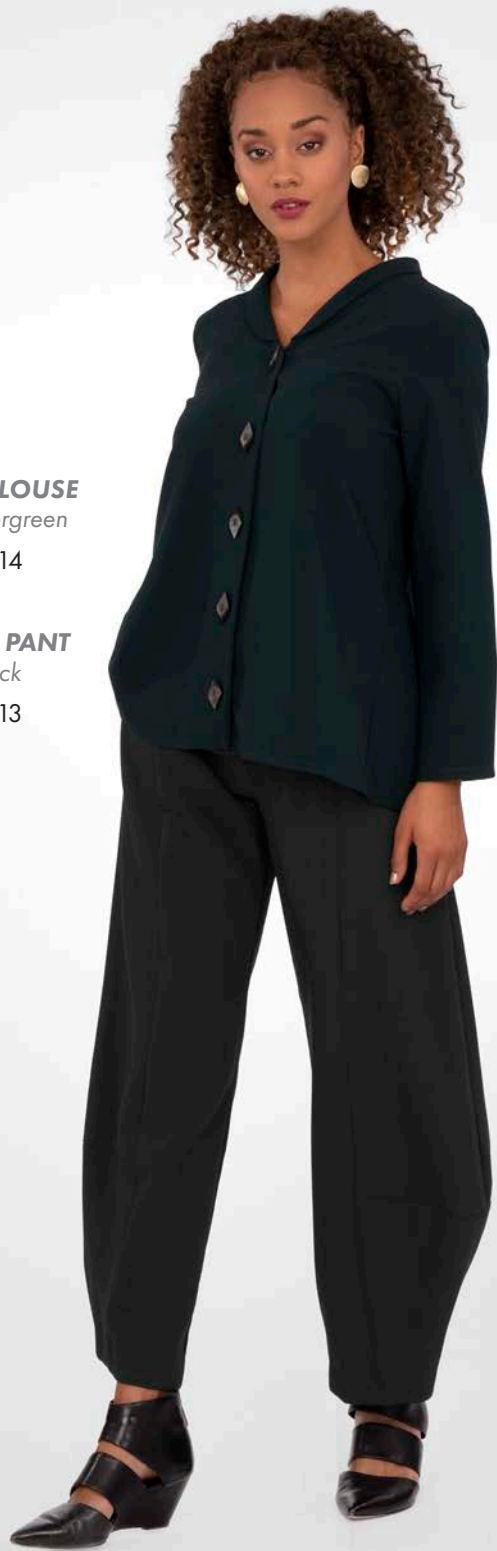
Roma: Evergreen

Web Knit: Grey



RAINDROP COAT
Leopard: Multi
Style #89542

September | Fall 2019



September | Fall 2019



BALSA TOP
Angles Knit: Multi
Style #82846

September | Fall 2019



TAHOE TUNIC
Cypress Knit:
Multi
Style #9022

REEF TUNIC
Rayon: Black Marble
Style #4327



September | Fall 2019



SET POINT TOP
Roma: Black
Style #63008

LANTERN PANT
Roma: Black
Style #63001

WHISPER DRESS
Roma: Black
Style #63004



JOURNEY VEST
Angles Knit: Multi
Style #82843



September | Fall 2019

OCT

Black, white and red is a classic color combo that works for every season. Diamond jacquard separates have great stretch and soft handfeel, perfect for travel.

Stretch velvet combined with Roma is an elegant party look.



Diamond: Black

Diamond: Red

Eyes Wide: Red/Black

Party Knit: Black

Rose Print

Square Knit

Velvet





RADIO TOP
Diamond Knit:
Red
Style #6431

EASY PANT
Diamond Knit:
Black
Style #6425

October | Fall 2019



THYME BLOUSE
Diamond Knit:
Black
Style #6427



DIAMOND TUNIC
Diamond Knit:
Red
Style #6429



SENTIMENT JACKET
Rose: Multi
Style #4902

HEADLINE TOP
Eyes Wide:
Red/Black
Style #72046



INBOX DRESS
Eyes Wide:
Red/Black
Style #72045





HIGHWATT TUNIC
Square Knit: Multi
Style #82854

WISHBONE TEE
Party Knit: Black
Style #55765



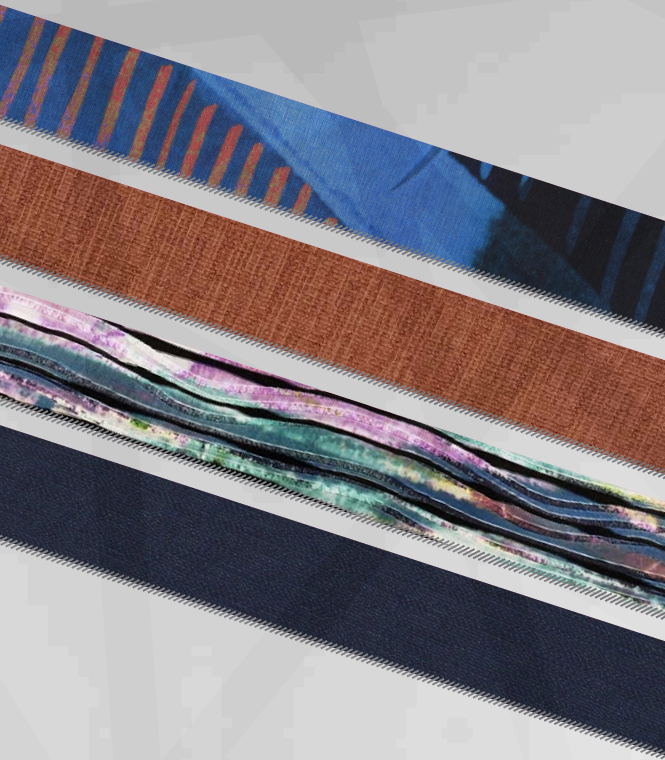


VAPOR TUNIC
Velvet: Black
Style #89501

AURA PANT
Velvet: Black
Style #89502



EASY PANT
Velvet: Black
Style #89500



Blue Bayou

Rayon: Ginger

Ribbon

Rayon: Midnight

NOV

Watercolor blues in a bold, abstract print coordinate back to earthy Ginger and Midnight solid separates.



GEMMA TOP
Blue Bayou:
Blue Multi
Style #55826

WATERFALL BLOUSE

Rayon: *Electric Blue*

Style #4363



What makes Niche special:

- All Sizes: Niche comes in every size for every body type. We offer XS-XXL and 1X-3X.
- Easy to Wash: Most of our clothing is machine-washable. Just wash in a gentle cycle and hang to dry.
- Pockets: We can't live without pockets, so we add them to nearly every style.
- Travel: Niche is fantastic for travel. Our pucker fabrics are especially easy to pack and will not wrinkle.
- All Occasions: We wear Niche to work, to relax, to travel, and to go out at night.
- Unique: Our pieces are stylish, artful, contemporary, and unlike anything else.
- Well Made: We use fabrics that feel wonderful and wear well over time. Each piece is made to last.



Niche

@nicheclothing



www.nicheclothingco.com
niche@nicheclothingco.com