



niche

N I L G U N • D E R M A N

FALL

2017



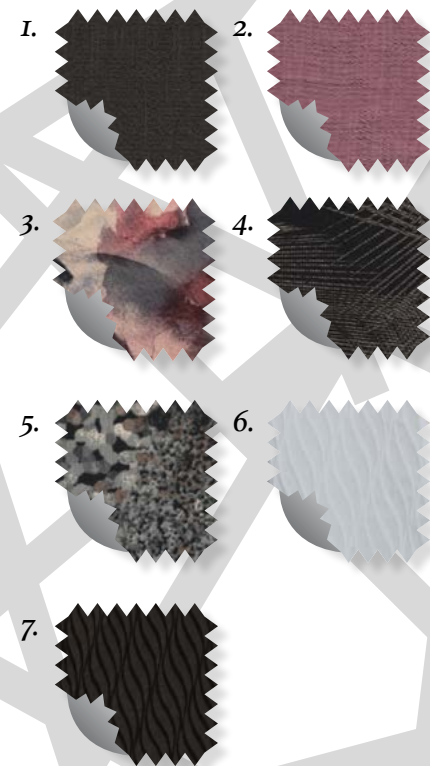
# niche

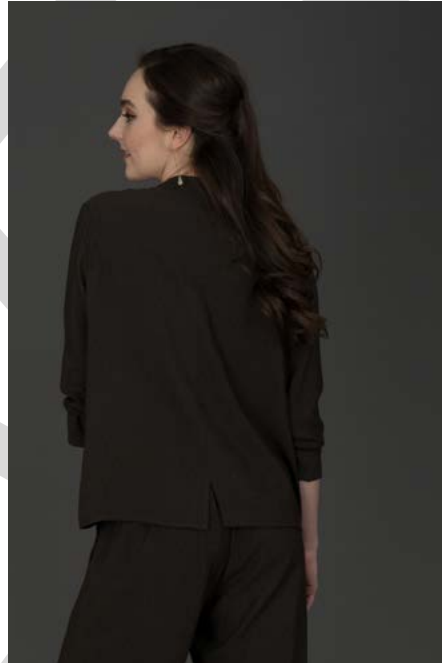
---

Niche is a collection of modern soft separates with rich textures, textiles, and distinctive architectural details. It is designed and sewn in the USA and found in high-end boutiques across the US and Canada since 1996.

# AUG

- 1. Rayon Crepe: Coal
- 2. Rayon Crepe: Dark Rose
- 3. Silky Prints: Harvest Rose
- 4. Brass Palm: Black/Gold
- 5. Granite Knit: Grey Multi
- 6. Wave: White
- 7. Wave: Tortoise





**MEADOW TUNIC**

**Crepe:** dark rose

Style #4310

**REEF PANT**

**Crepe:** coal

Style #3250



**TRELLIS BLOUSE**

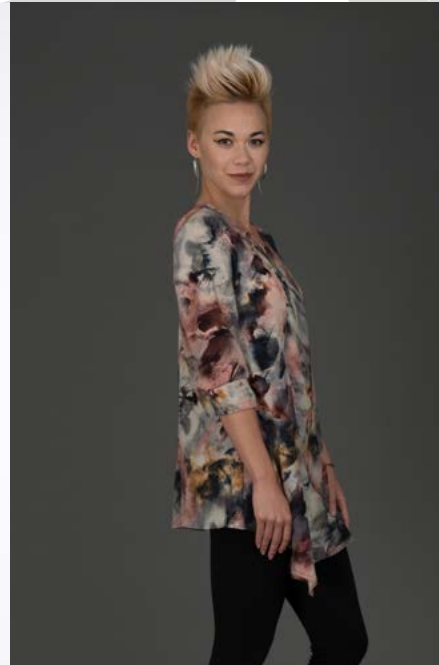
**Crepe:** coal

Style #4332





**ORIGAMI TUNIC**  
*Crepe: black*  
Style #4315



**LAGUNA TOP**  
*Silky Prints: harvest rose*  
Style #55714





**PALM SPRINKLE TEE**  
*Brass Palm: black/gold*  
 Style #55761



**TAHOE TUNIC**  
*Granite Knit: grey multi*  
 Style #55724





**PANORAMA BLOUSE**

Wave: white

Style #7196



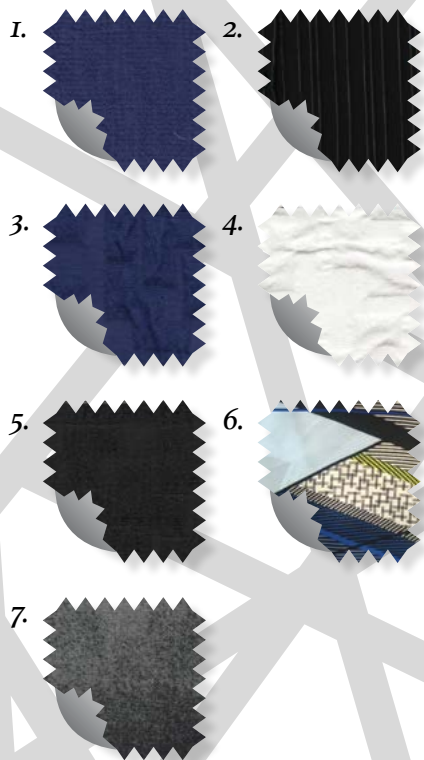
**FRIDAY JACKET**

Wave: tortoise

Style #7195



# SEPT



1. Rayon: Iris
2. Pleats: Black
3. Circuit: Iris
4. Circuit: White
5. Circuit: Black
6. Iris Geo: Multi
7. Grey Clouds





**BROADWAY JACKET**

Rayon: iris

Style #4334



**HILLSIDE TUNIC**

Pleats: black

Style #55783





**PEARL TOP**  
*Pleats: black*  
Style #55782



**TRIANGLE TOP**  
*Circuit: iris*  
Style #55754

September

Fall 2017



**CIELO PANT**  
Circuit: black  
Style #55753



**DISTRICT TOP**  
Circuit: white  
Style #55752



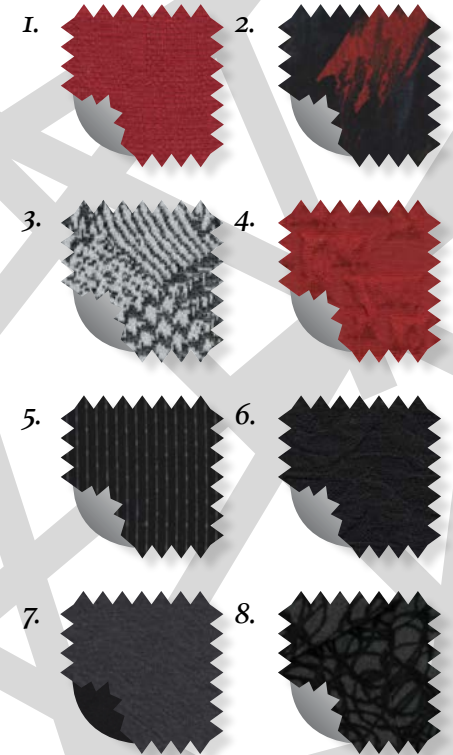
**CAMPAIGN JACKET**  
Circuit: black  
Style #55758





1. Rayon Crepe: Cranberry
2. Graffiti Knit: Black Multi
3. Newsprint: Black/White
4. Circuit: Cranberry
5. Ponti: Stripe
6. Cheveron: Black
7. Cozy Knit: Grey (front)  
Cozy Knit: Black (back)
8. Scribble: Black Grey

# OCT





**TRELLIS BLOUSE**  
**Crepe:** cranberry  
Style #4332



**BLOOM TOP**  
**Graffiti Knit:** black multi  
Style #55732

Fall 2017

**TRIANGLE TOP**  
**Circuit:** cranberry  
Style #55754



**NEWSPRINT TOP**  
**Newsprint:** black/white  
Style #55736



**DISTRICT TOP**  
**Circuit:** cranberry  
Style #55752

**ALL DAY PANT**  
**Ponti:** stripe  
Style #6105



**MOON TOP**  
**Chevron:** black  
Style #55743



**ASTORIA DRESS**  
Cozy Knit: grey  
Style #55770



**REVERSIBLE CANAL VEST**  
Cozy Knit: grey/black  
Style #55773







**MUSEUM DRESS**  
Cozy Knit: black  
Style #55771





**JEWEL JACKET**  
*Scribble: black/grey*  
Style #55794





**Niche**

@nicheclothing

[www.nicheclothingco.com](http://www.nicheclothingco.com)

[niche@nicheclothingco.com](mailto:niche@nicheclothingco.com)

